

# Newsletter

**MINERVA**<sup>®</sup>

Member of DÜRKOPP ADLER Group

## A new version of a built-in-motor

Our company has responded to the customers' suggestions concerning the improvement of the direct drive, which is used in the Dürkopp Adler shoemachines, Eco and Classic types.

The result is a so-called compact direct drive. The compact direct drive shall be supplied as a unit: this drive shall not be assembled and supplied by single parts anymore – stator, rotor, encoder, etc.

Advantages of the compact direct drive us –

- Motor design improvement
- Simple motor replacement, if needed
- Elimination of drawbacks due to earlier motor design

From January 2016 the compact direct drive shall be installed, as standard, in the following types of sewing machines:

838-170522-M  
838-270522-M  
884-140152-M  
887-160122-M  
887-363122-M  
887-363522-M  
887-260122-M  
888-160122-M  
888-260122-M  
.. 888-356122-M  
888-160152-M  
888-460522-M  
888-360122-M  
888-167122-M

## MINERVA BOSKOVICE, a.s.

Sokolská 1318/60, CZ-680 01 Boskovice

Phone: +420 516 494 211, Fax: +420 516 452 165

e-mail: [sales@minerva-boskovice.com](mailto:sales@minerva-boskovice.com)

[www.minerva-boskovice.com](http://www.minerva-boskovice.com)

# Newsletter

**MINERVA**<sup>®</sup>

Member of DÜRKOPP ADLER Group

The existing motor consisting of separate components shall be also manufactured in the future.

For your information please find enclosed parts of catalogs of the Eco and Classic shoemachines, presenting the existing and the new versions of the drives.

We believe that this alternation will further improve the quality of the DA shoemachines. If needed, please contact your dealer.

Enclosure:  
Compact drive 888-M

***Issued 12/2015***

**MINERVA BOSKOVICE, a.s.**

Sokolská 1318/60, CZ-680 01 Boskovice

Phone: +420 516 494 211, Fax: +420 516 452 165

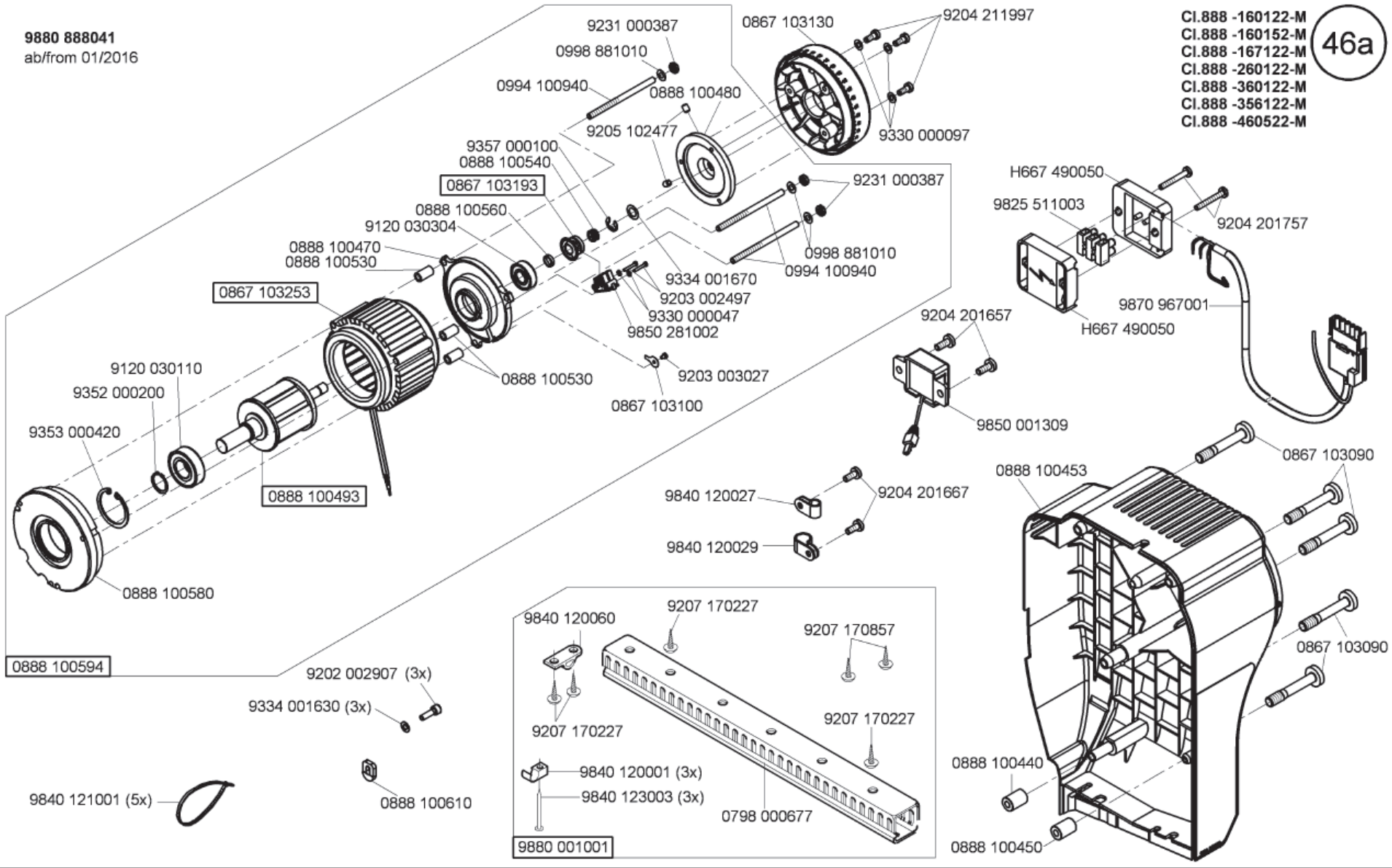
e-mail: [sales@minerva-boskovice.com](mailto:sales@minerva-boskovice.com)

[www.minerva-boskovice.com](http://www.minerva-boskovice.com)

**9880 888041**  
ab/from 01/2016

CI.888 -160122-M  
CI.888 -160152-M  
CI.888 -167122-M  
CI.888 -260122-M  
CI.888 -360122-M  
CI.888 -356122-M  
CI.888 -460522-M

46a



CI. 888 - M

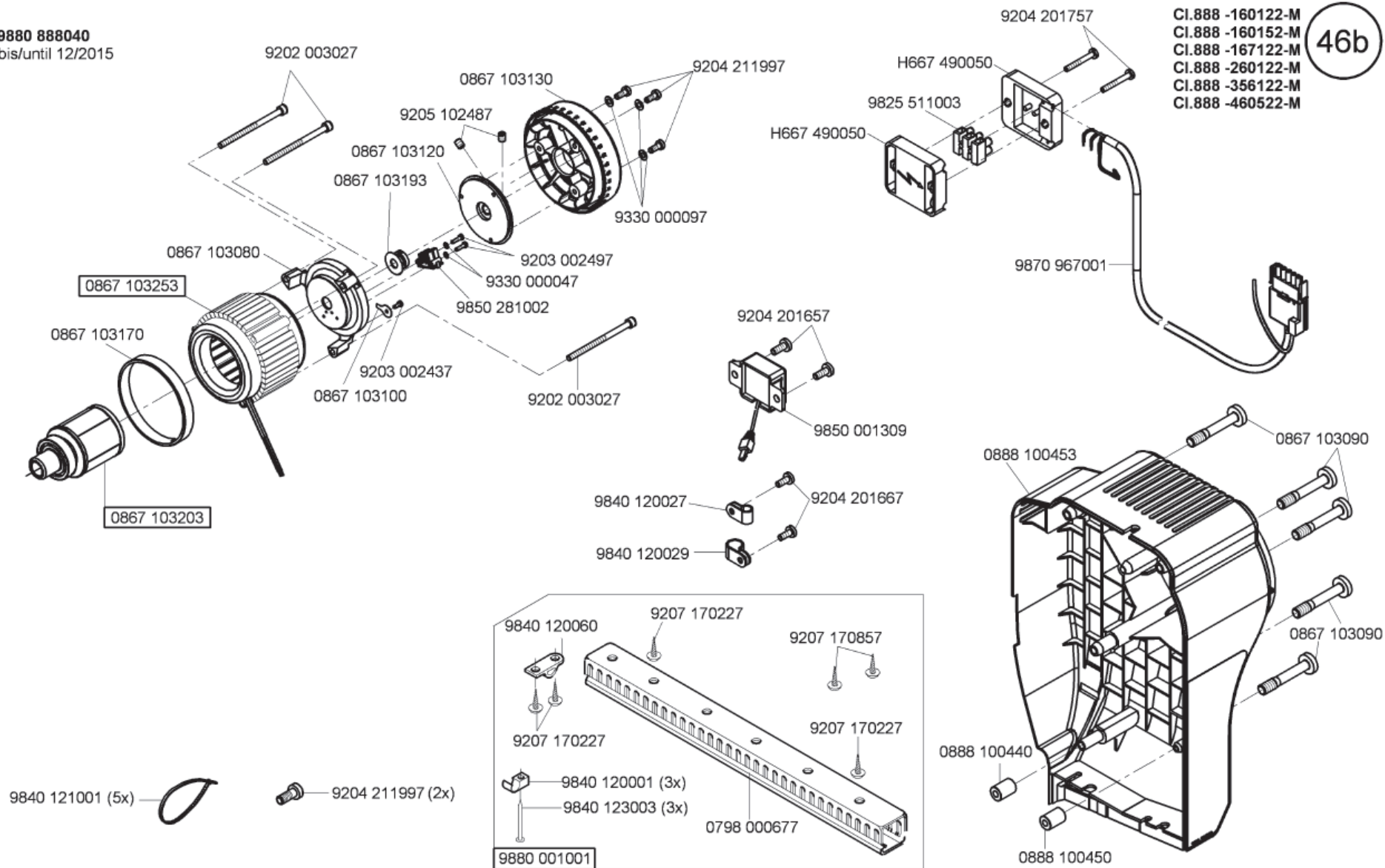
Ausgabe/Edition 11.2015



**9880 888040**  
bis/until 12/2015

46b

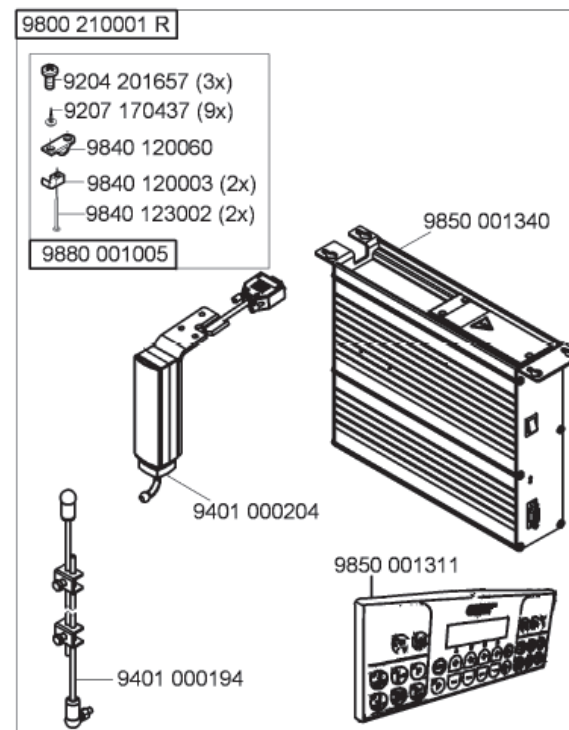
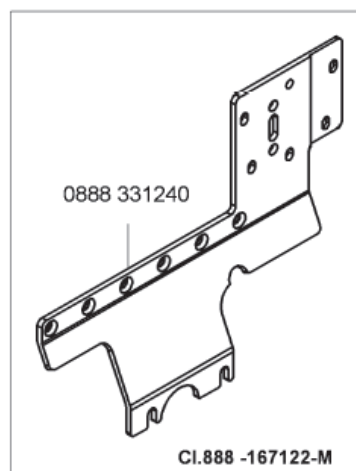
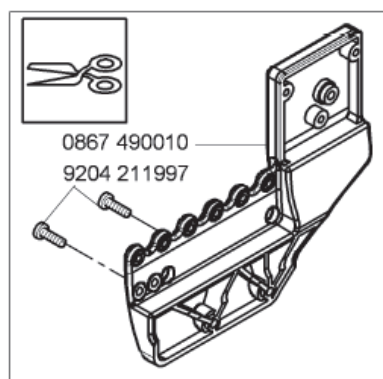
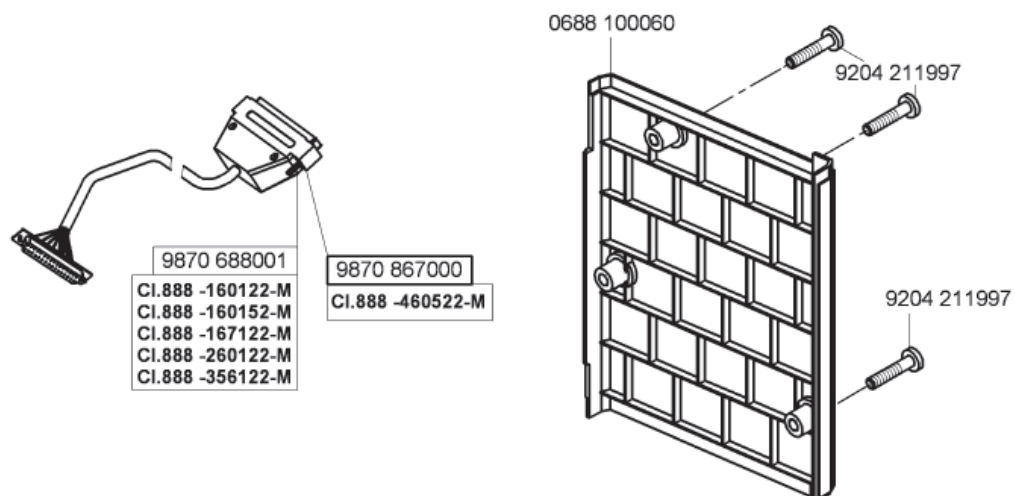
CI.888 -160122-M  
CI.888 -160152-M  
CI.888 -167122-M  
CI.888 -260122-M  
CI.888 -356122-M  
CI.888 -460522-M



CI. 888 - M

Ausgabe/Edition 11.2015

CI.888 -160122-M  
 CI.888 -160152-M  
 CI.888 -167122-M  
 CI.888 -260122-M  
 CI.888 -356122-M  
 CI.888 -460522-M



CI. 888 - M